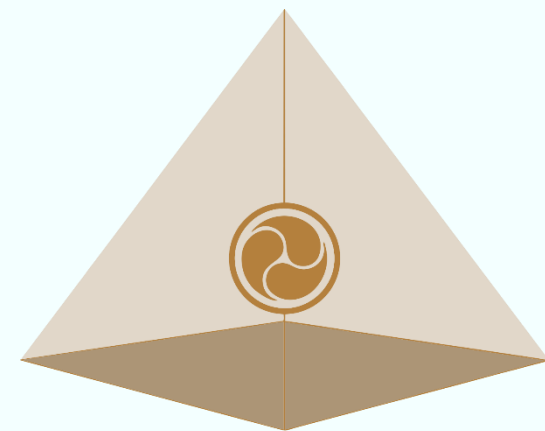


LIGHT MANDALAS

Eco Wellness Geodesic Dome



LIGHT MANDALAS

“You never change things by fighting the existing reality.
To Change something, build a new model that makes the existing model obsolete.”

R. Buckminster Fuller
American Architect
Geodesic dome inventor (1940s)



The "Eco Wellness Geodesic Dome" pitch introduces a timely, innovative concept for wellness guest rooms that cater to the growing consumer demand for health-focused accommodations. By identifying a gap in traditional hospitality, it proposes leveraging technology and bioenergetic scanning to offer personalized wellness experiences that support healing and reduce stress.

Key strengths include:

1. Innovative Solution: Customizing room environments based on bio-resonance analysis for individual healing needs.
2. Timeliness: Capitalizing on the post-pandemic surge in wellness-oriented lifestyles.

Areas for enhancement:

1. Market Analysis: More detailed data on the wellness tourism market size and growth.
2. Competitive Landscape: A clearer distinction of how Eco Wellness Resorts stand out from existing offerings.
3. Financial Details: Insights into the business model, expected ROI, and detailed financial projections.

To attract potential investors, the pitch should focus on detailing the market opportunity, unique competitive advantages, financial viability, and the team's expertise in both hospitality and wellness. This approach will not only clarify the business potential but also underline the capability to execute the proposed vision effectively.



6m Geodesic Dome



6m Geodesic Dome

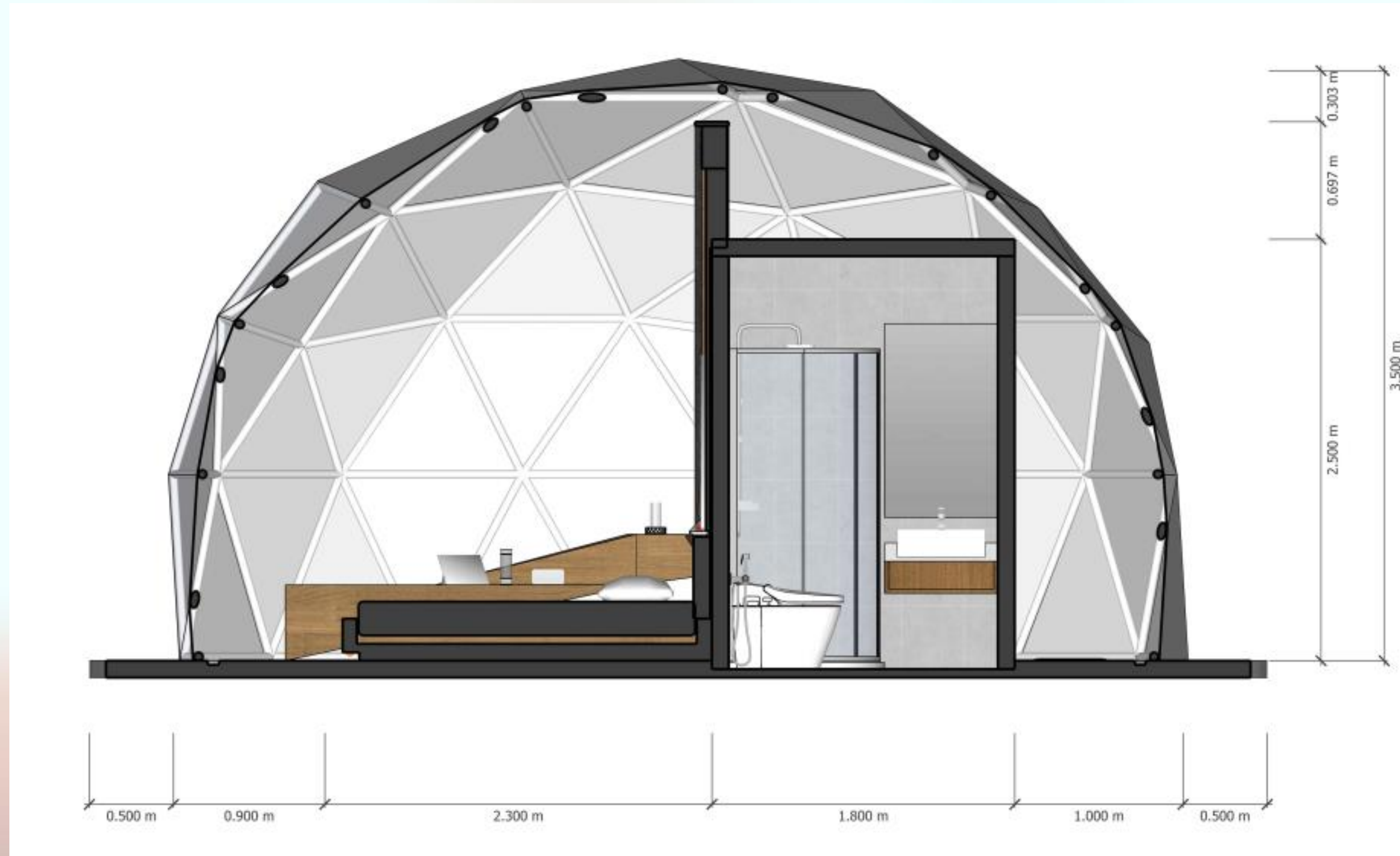




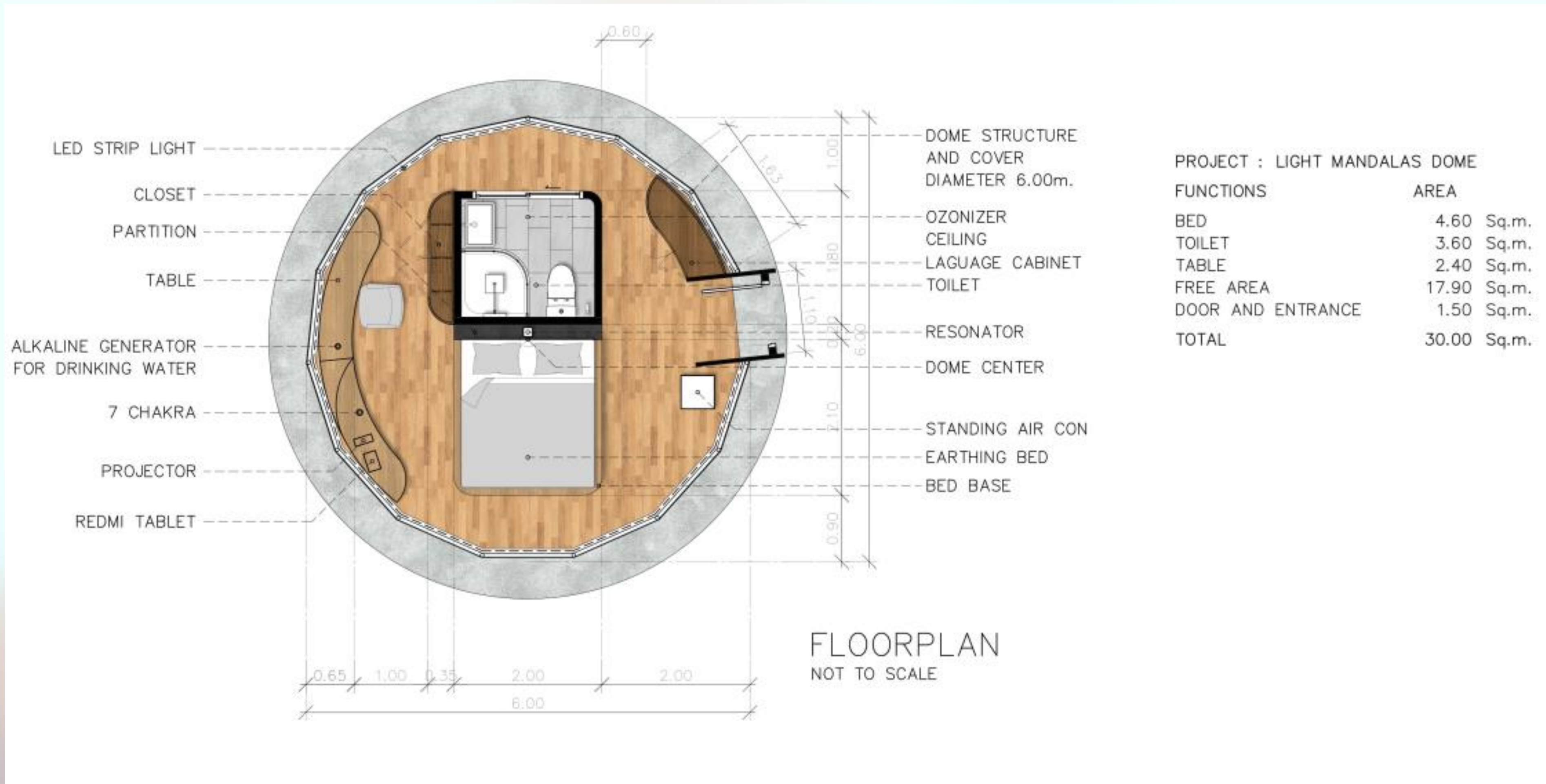
6m Geodesic Dome



6m Geodesic Dome



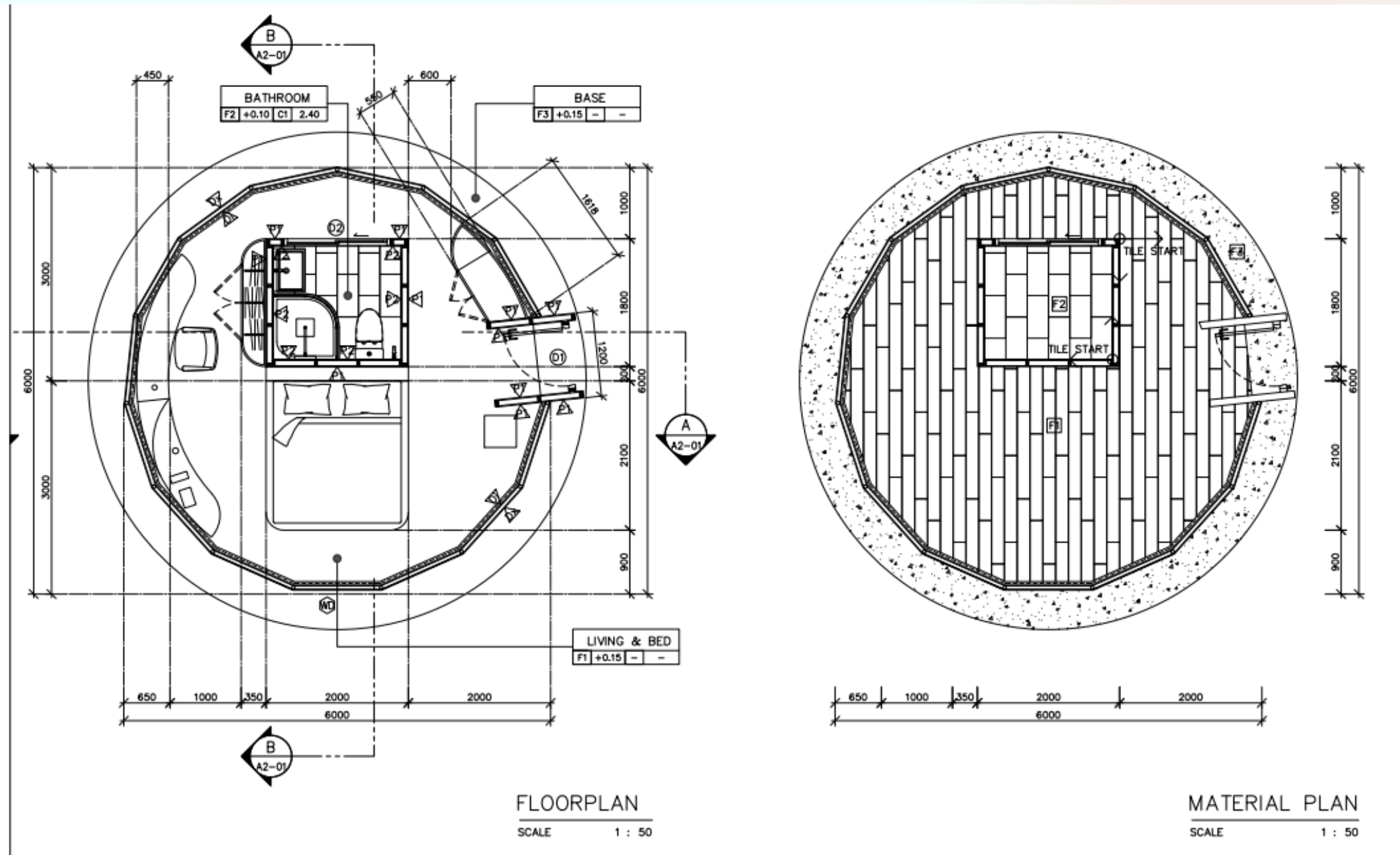
6m Geodesic Dome


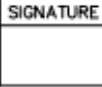


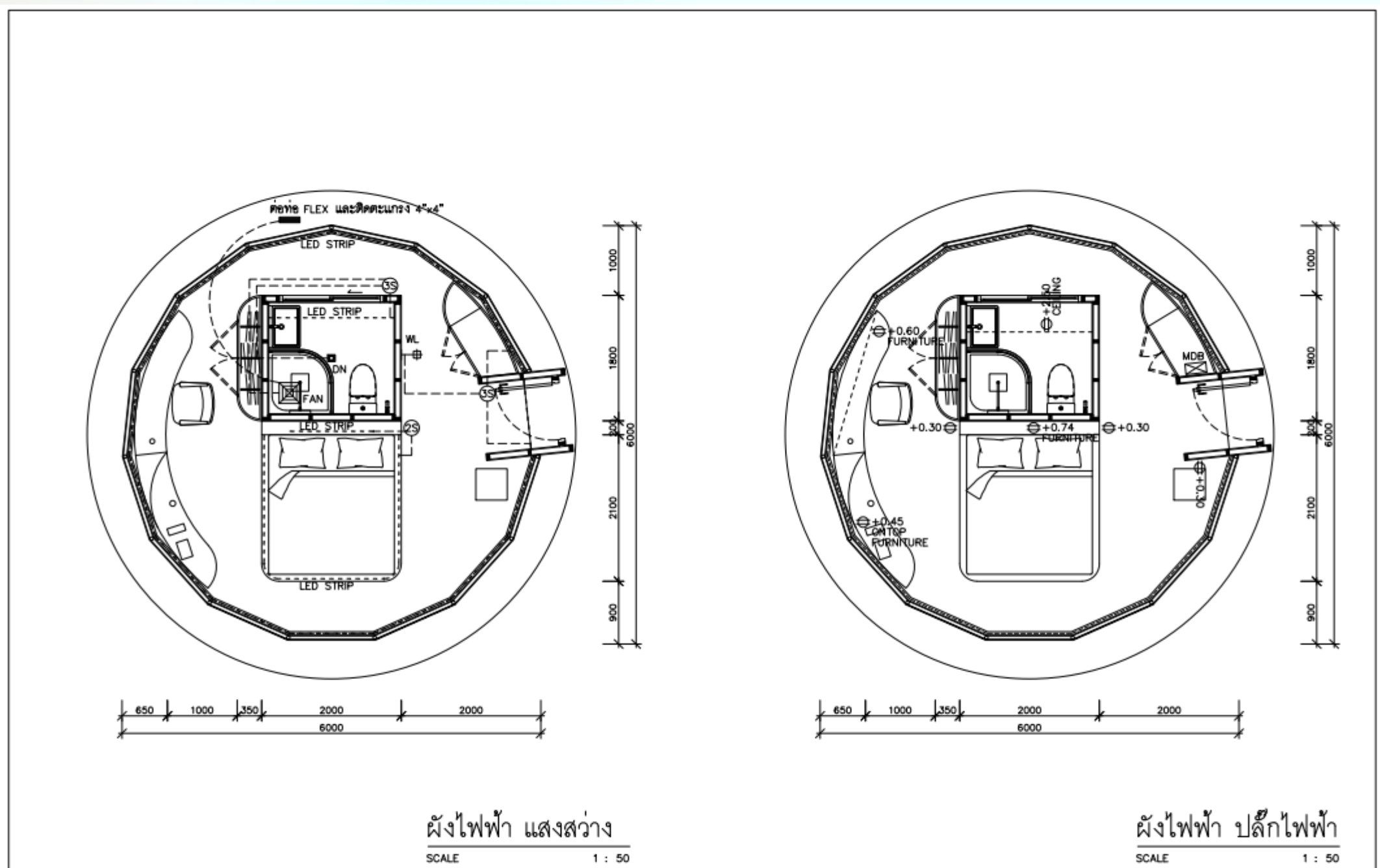
PROJECT : LIGHT MANDALAS DOME



FUNCTIONS	AREA
BED	4.60 Sq.m.
TOILET	3.60 Sq.m.
TABLE	2.40 Sq.m.
FREE AREA	17.90 Sq.m.
DOOR AND ENTRANCE	1.50 Sq.m.
TOTAL	30.00 Sq.m.

6m Geodesic Dome Design



ARCHITECTS : บริษัท มณฑลศิลป์ จำกัด เลขที่ 232/28 โทร 081-5955356 เลขที่ 8 ถนนสุขุมวิท ซอยสุขุมวิท 24 กรุงเทพฯ	SIGNATURE : 	STRUCTURAL ENGINEERS : SIGNATURE :	SANITARY ENGINEERS : SIGNATURE :	PROJECT : LIGHT MANDALAS DOME	OWNER : นายธีรชัย ปิ่นตมิต	ISSUED / REVISION : NO. DESCRIPTION DATE
ARCHITECTS : บริษัท มณฑลศิลป์ จำกัด	SIGNATURE : 	ELECTRICAL ENGINEERS : SIGNATURE :	MECHANICAL ENGINEERS : SIGNATURE :	DRAWING TITLE : ผังพื้น , ผังวัสดุพื้น	LOCATION : ตำบลบ้านกล้วย อำเภอคลองหลวง จังหวัดปทุมธานี	CHECKED BY : DRAWING NO. A1-01



ARCHITECTS : บริษัท มณฑลศิลป์ จำกัด เลขที่ 232/28 โทร 081-5955356 เลขที่ 8 ถนนสุขุมวิท ซอยสุขุมวิท 24 กรุงเทพฯ	SIGNATURE : 	STRUCTURAL ENGINEERS : SIGNATURE :	SANITARY ENGINEERS : SIGNATURE :	PROJECT : LIGHT MANDALAS DOME	OWNER : นายธีรชัย ปิ่นตมิต	ISSUED / REVISION : NO. DESCRIPTION DATE
ARCHITECTS : บริษัท มณฑลศิลป์ จำกัด	SIGNATURE : 	ELECTRICAL ENGINEERS : SIGNATURE :	MECHANICAL ENGINEERS : SIGNATURE :	DRAWING TITLE : ผังระบบไฟฟ้า	LOCATION : ตำบลบ้านกล้วย อำเภอคลองหลวง จังหวัดปทุมธานี	CHECKED BY : DRAWING NO. E-01

* Complete Design, in English, shall be given when the project is confirmed.



8m Geodesic Dome





8m Geodesic Dome

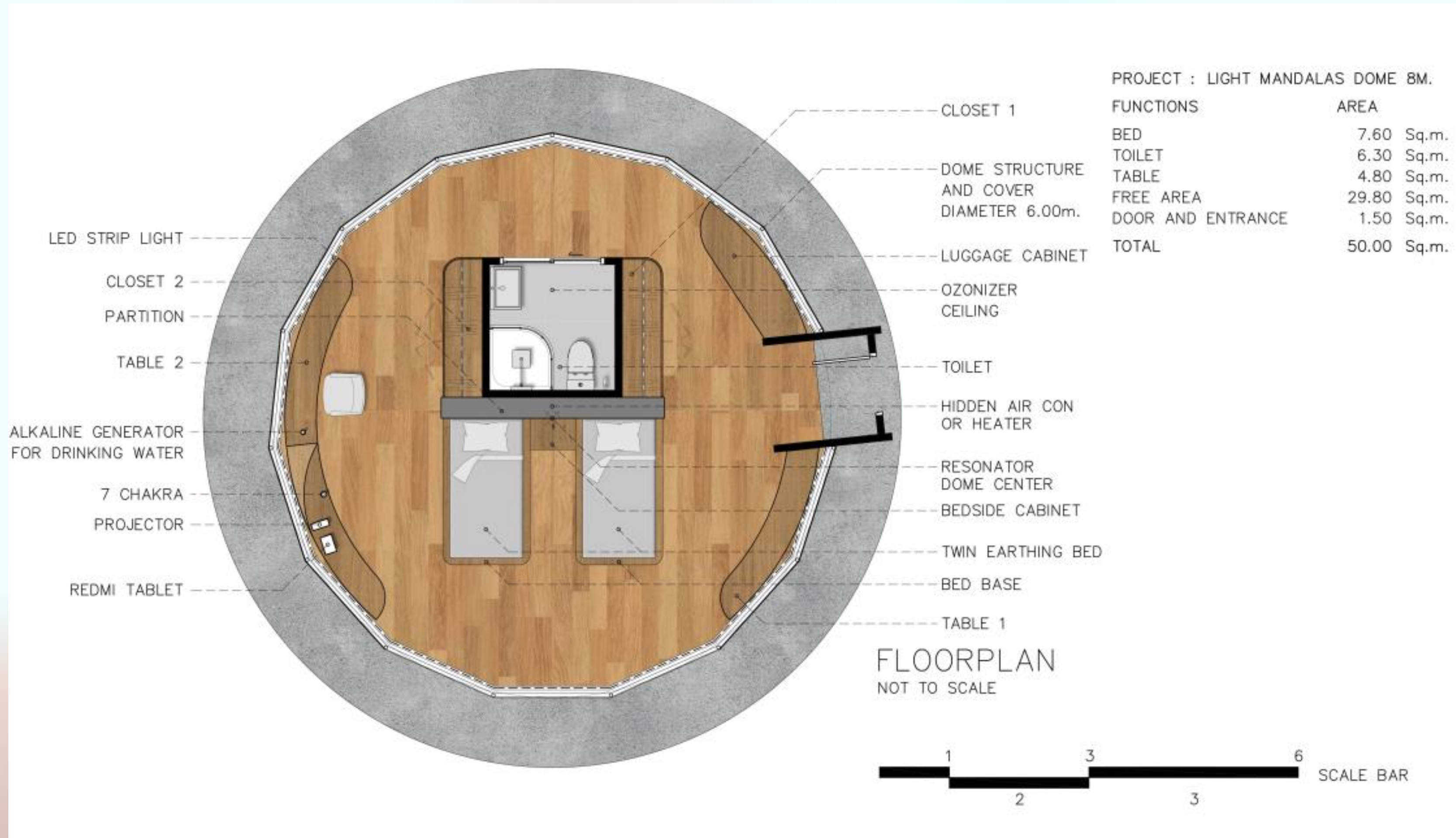




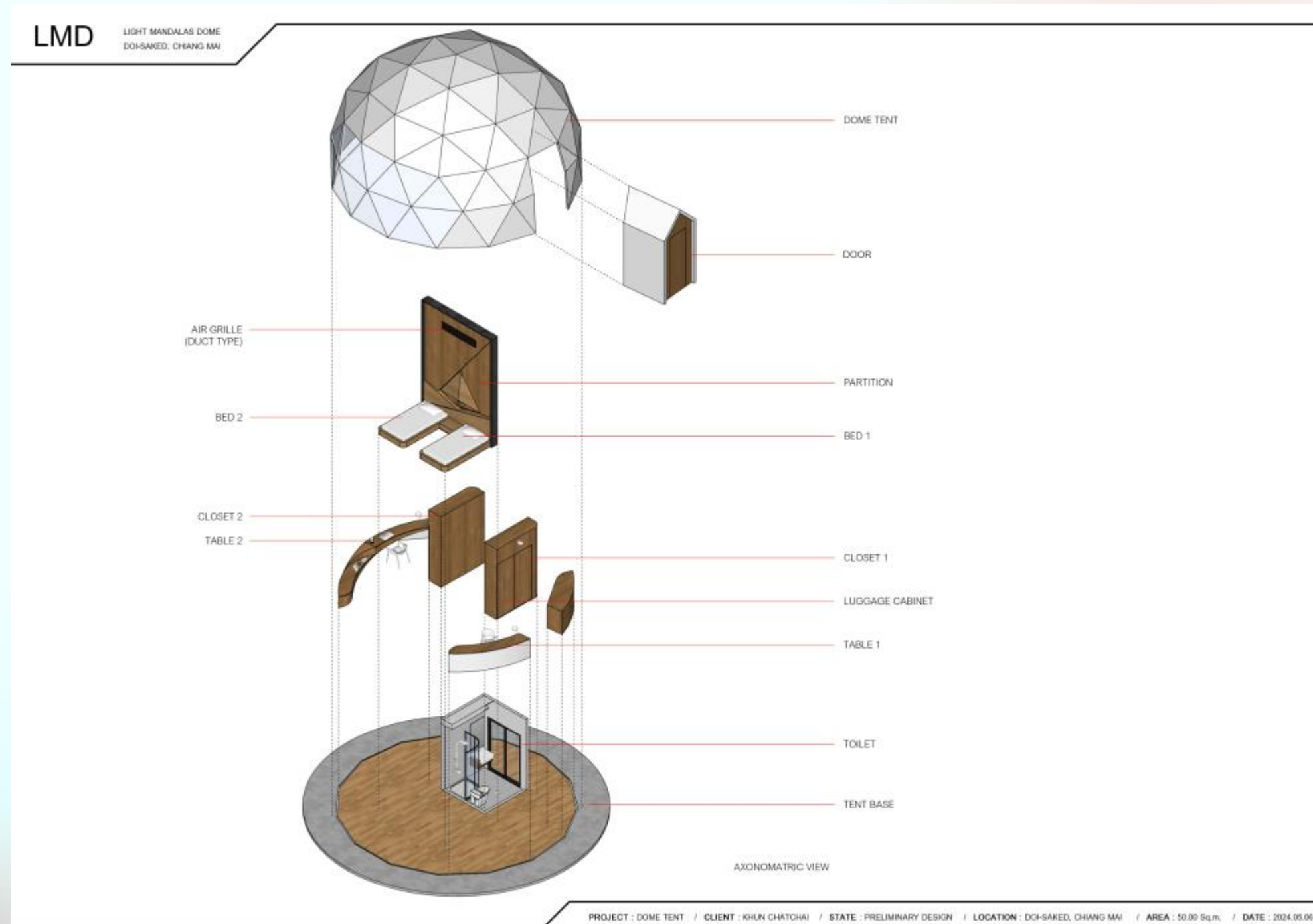
8m Geodesic Dome



8m Geodesic Dome



8m Geodesic Dome Design



* Complete Design, in English, shall be given when the project is confirmed.

12m Geodesic Dome event space idea



* Picture as reference.

12m Geodesic Dome event space idea



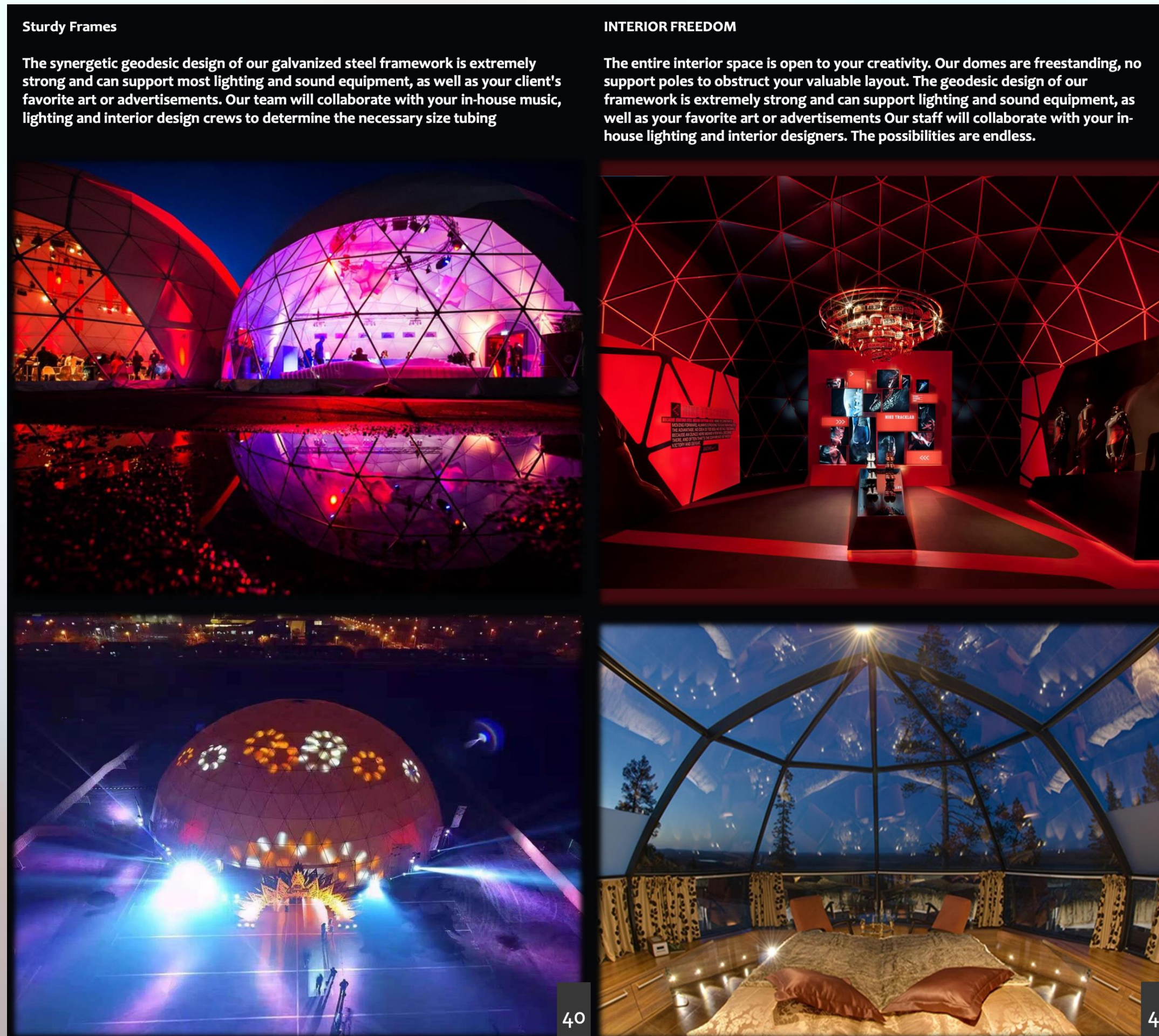
* Picture as reference.

12m Geodesic Dome event space idea

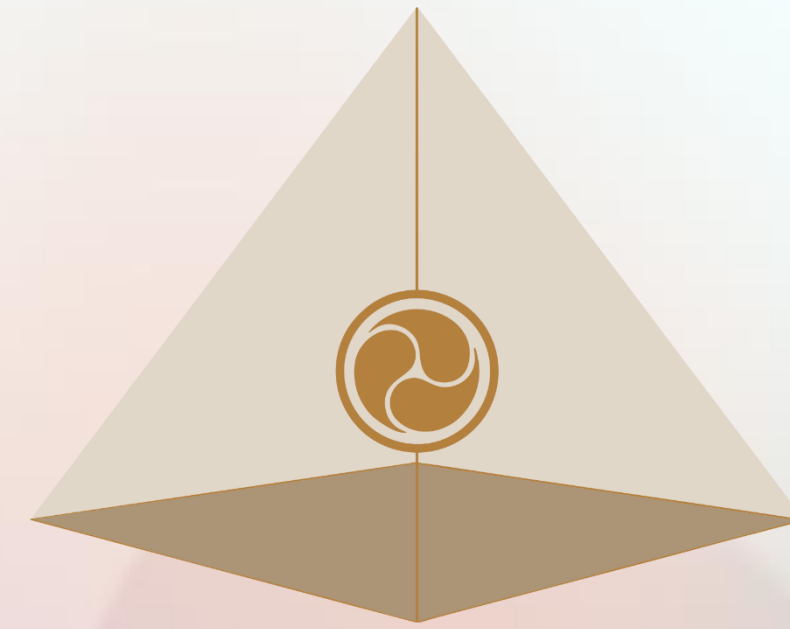


* Picture as reference.

12m Geodesic Dome event space idea



* Picture as reference.



LIGHT MANDALAS

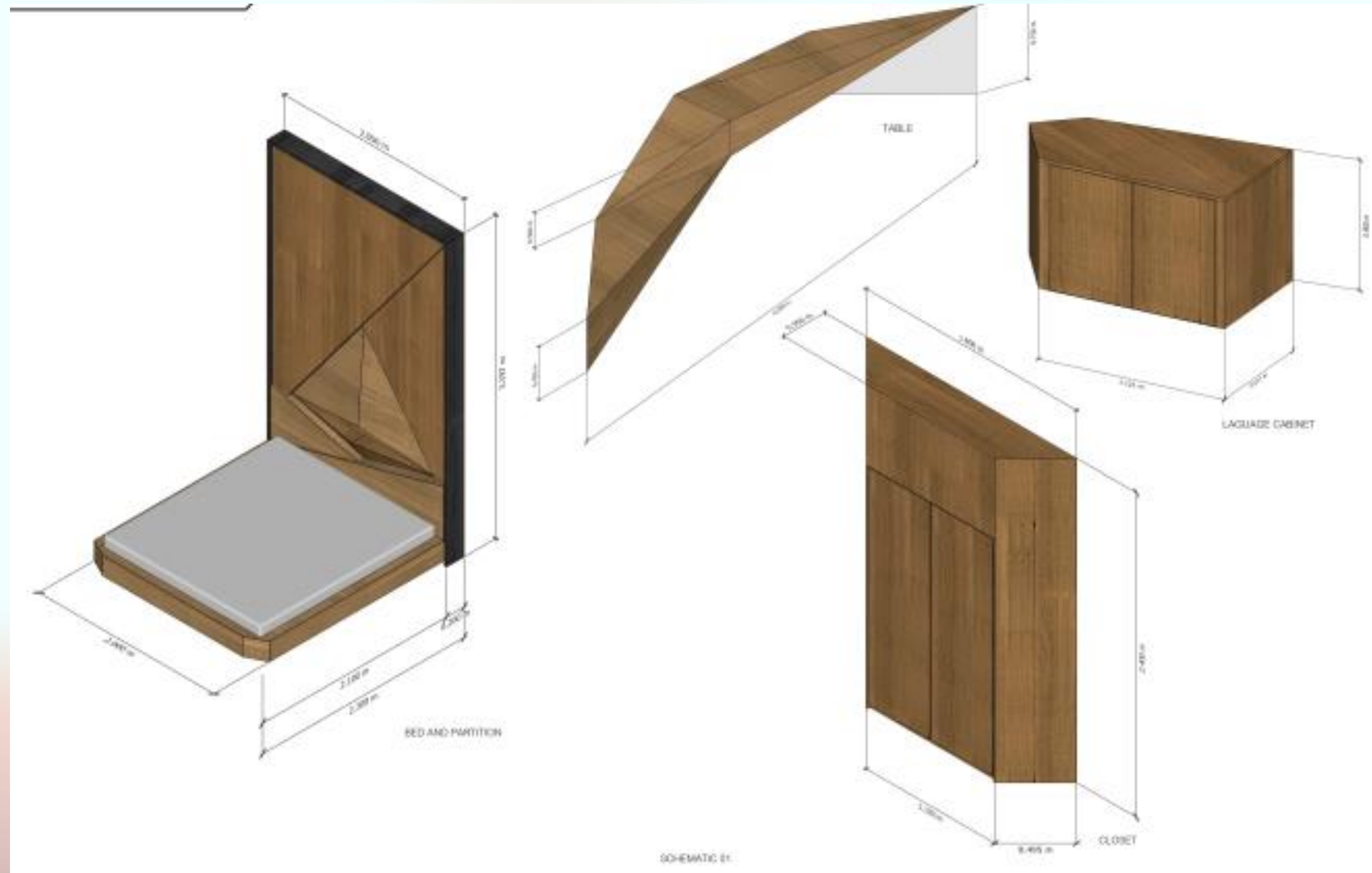
Proposal & Details



6m Geodesic Dome



6m Geodesic Dome Furniture built-in set



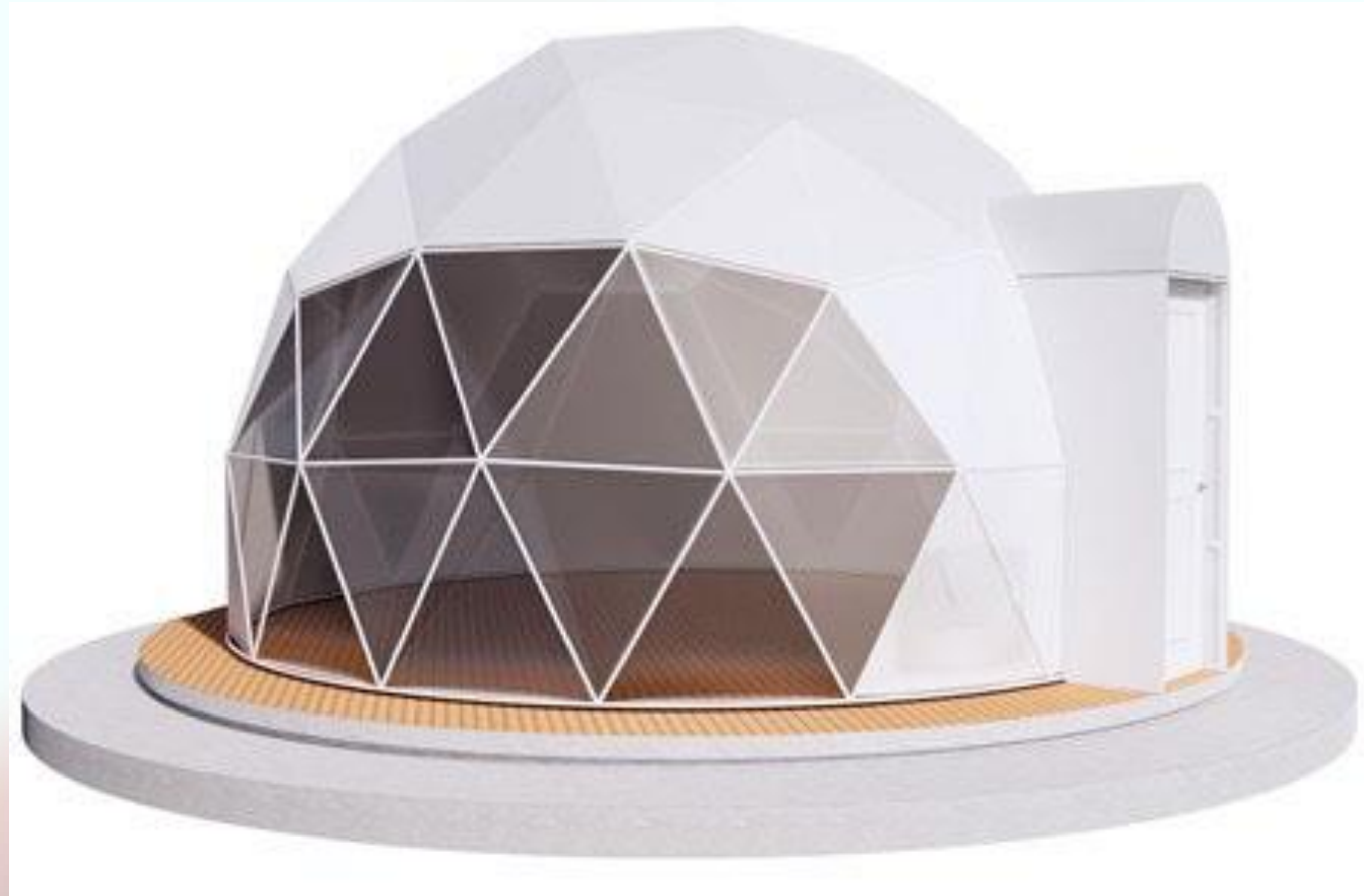
8m Geodesic Dome



8m Geodesic Dome Furniture built-in set



Geodesic Dome for Event start from 12m size



* Picture as reference.

Geodesic Dome Accommodations



Canvas & Aluminum foil insulation (Color optional)



White aluminum alloy tempered glass door with keypad lock



Solar Roof Ventilation Exhaust Fan



Full shading luxury 100% polyester gray curtain (Color optional)

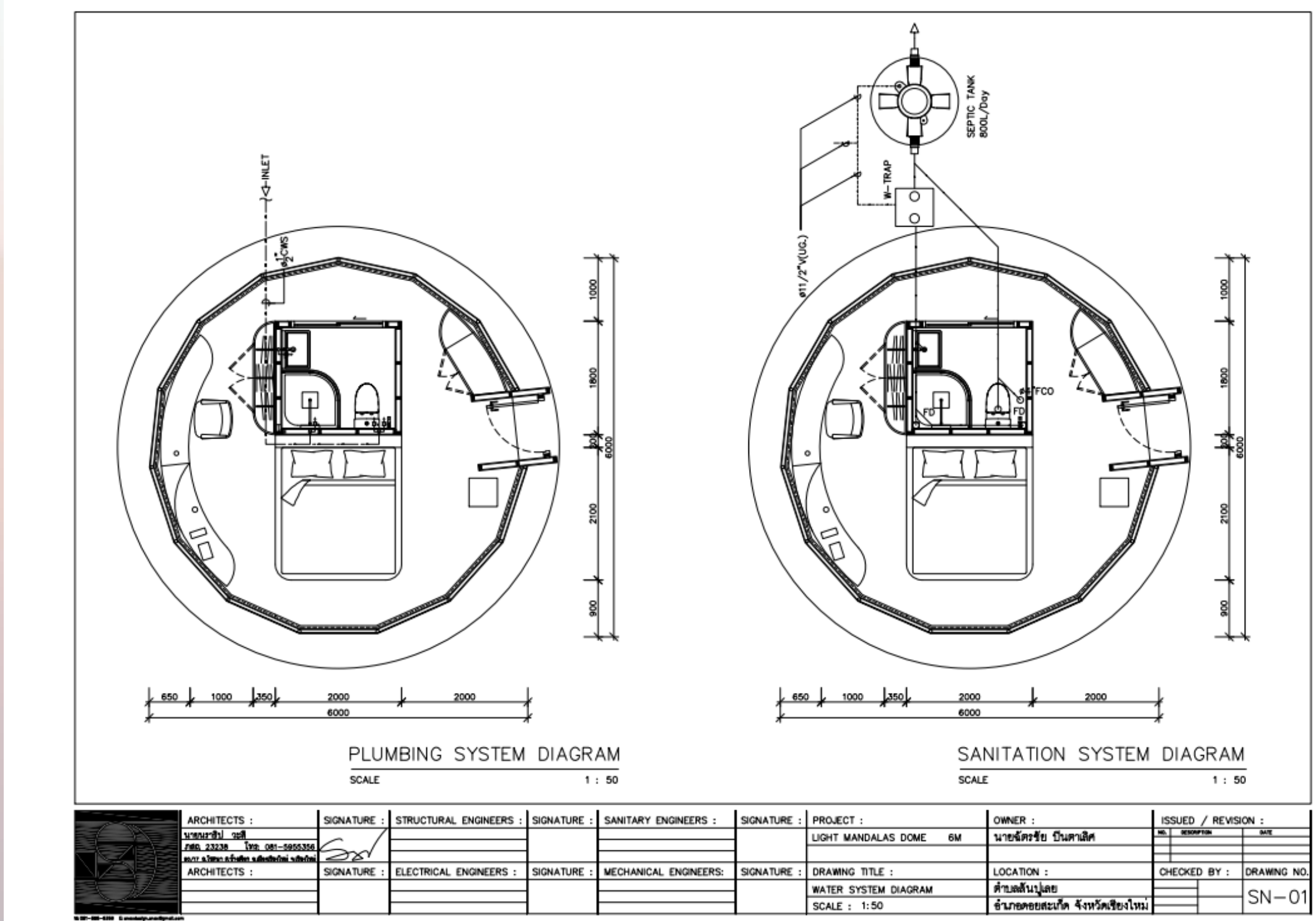
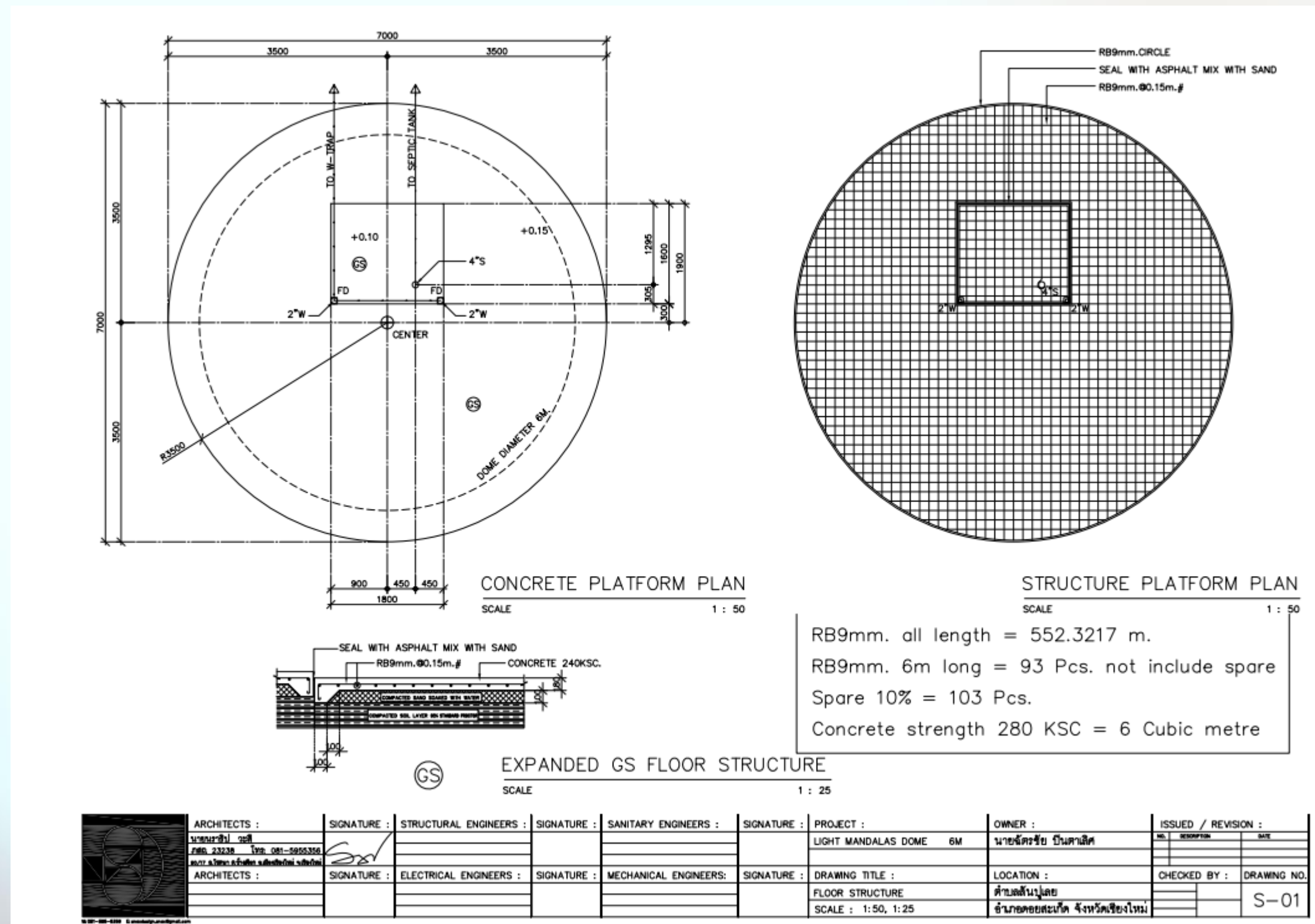


Arched triangular PVC ventilation window with mosquito net

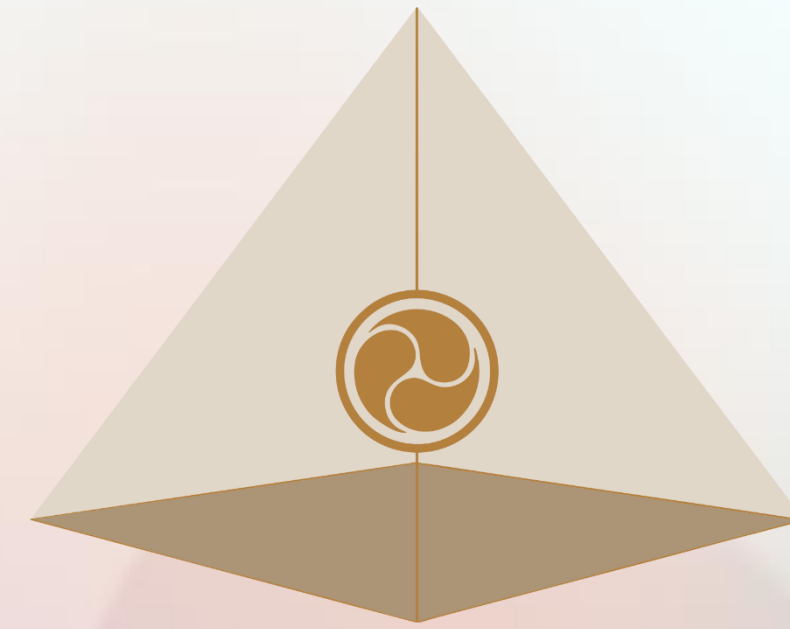


Completed Integrated Bathroom Module (Color optional)
- Hot and cold water system
- Water Heating device included

Geodesic Dome Platform Design for Contractor



* Complete Design, in English, shall be given when the project is confirmed.



LIGHT MANDALAS

Wellness Technology (Optional)



Mandala Mood Architecture

Principles of Eco-Wellness Life-Style Design

Light Mandalas introduces the "Eco Wellness Geodesic Dome," an avant-garde concept in wellness resorts aimed at enhancing overall well-being. Our guest rooms are designed to alleviate stress and support healing through innovative technologies. Upon arrival, guests participate in a welcome ritual that includes a comprehensive bio-resonance analysis while enjoying a welcome drink. This analysis, measuring the body's electromagnetic frequencies, allows us to tailor the room's environment – light, color, sound, and electromagnetic spectrum – to each guest's specific health needs.

Throughout their stay, guests experience continuous emotional and physical balancing during 8-10 hours of rest each night, promoting a transformative wellness experience beyond the conventional B&B. This unique approach not only differentiates your resort but also attracts those seeking a holistic rejuvenation experience. Embrace the future of Wellness Tourism with Light Mandalas' health-centric accommodations.



Mandala Mood Architecture

Principles of Eco-Wellness Life-Style Design

Incorporating bio-resonance analysis in wellness guest rooms provides multiple benefits:

1. **Holistic Health:** It addresses root causes of ailments, harmonizing the body's energy fields to enhance overall well-being.
2. **Personalized Care:** Identifies individual health imbalances, allowing for customized wellness treatments.
3. **Complements Traditional Medicine:** Can be integrated with conventional treatments, improving their efficacy.
4. **Low Risk:** bio-resonance therapy is noted for having minimal side effects, appealing to those seeking natural healing methods.
5. **Reduces Stress:** It rebalances the body's energies, promoting relaxation and mental health.
6. **Unique Experience:** Offers a distinctive wellness experience that can differentiate a resort, attracting health-focused guests.

This strategy not only fosters a holistic and personalized health approach but also enriches the guest experience, appealing to wellness-oriented travelers.



Mandala Mood Architecture

Principles of Eco-Wellness Life-Style Design

1. Application of Light therapy
2. Application of Sound Therapy
3. Application of Mood Harmonizer
4. Bioenergetic Scanning and Balancing
5. Stress reduction Projection System
6. Application of Ozone disinfection
7. Drinking activating and restructuring water
8. Grounding Bed Mats
9. Electronic Frequency Mosquito Repellent



Mandala Mood Interiors Architecture

Holistic Eco-Wellness Healthy Life-Style Rooms Technology

Light therapy -Full Spectrum Circadian Rhythm LED Lighting system to manage stress and maintain the nervous system's natural biorhythms, ensuring a good mood and healthy sleep cycles. This system changes the color temperature of the artificial lighting throughout the day, evening, and night to align with the guest's natural circadian rhythms. we offer the guests a comfortable and personalized environment that promotes relaxation, improves sleep cycles, and enhances overall well-being.



Sound Therapy - 360-degree high-definition sound therapy system, emitting gentle precise frequencies and sound waves, combined with personalized affirmations, is a valuable tool for lasting stress relief and deep emotional healing, offering a holistic approach to wellness.



Mandala Resonator is a unique universal broadband harmonizing generator-modulator designed to create a natural stabilizing electromagnetic background field, incorporating light, sound, and electromagnetic frequencies to harmonize the mood in spaces and contribute to relaxation and well-being. When combined with the tablet-based Bio-resonance evaluation tool Mandala Scan, it detects and reports the degrees of deviation between the client's energetic field and sends correcting signals to harmonize their emotional, mental, and physical energetic balancing.



Mandala Scan Bio-resonance Health Evaluation: detecting and reporting the degrees of deviation between the guest's healthy energetic field and sends the correcting signals to the Health Harmonizer to balance to heal the emotional, mental and physical energetic states, by producing the required electromagnetic fields of colored light, sound, Magnetic & plasma fields.



Grounding Bed Mats: Removes the harmful impact of electromagnetic fields such as mobile phones, Wifi etc. and restores the health and balance to the nervous system, brain and the natural electrical potentials of the body's cells.





Mandala Mood Interiors Architecture

Holistic Eco-Wellness Healthy Life-Style Rooms Technology

Galaxy Star Projector: projects moving Sky, Stars and Galaxies, turning the dome ceiling into a Planetarium atmosphere.



Ozone disinfection:

Ozone disinfects the air strengthens the immune system, destroys fungi, bacteria, viruses, removes bad smell and helps reduce the air dust, help breathing more smoothly, and improves the sleep quality.



Drinking Water Activating and Structuring:

Charges water by energizing its elements and restructuring its molecular clusters, thus activating the natural elements and minerals for better absorption, hydration and health enhancing qualities.



Electronic Mosquito Repellent: attracts mosquitos through UV light and eliminates them through a high voltage field without the use of harmful chemicals or sprays.





Mood Architecture: Full Spectrum LED Light

Light & Color therapy for Circadian lighting and stress management

Light Mandalas integrates a Full Spectrum Circadian Rhythm LED Lighting system into their wellness guest rooms, offering significant benefits:

1. **Natural Light Simulation:** This system mimics the day's natural light progression – from energizing morning light to soothing evening light – supporting a healthier circadian rhythm and overall well-being.
2. **Circadian Rhythm Regulation:** It sends signals to the brain to help regulate sleep patterns, hormone production, and general well-being.
3. **Stress Reduction and Relaxation:** Adjustable lighting modes align with the time of day, fostering relaxation and improving sleep quality.
4. **Mood and Productivity Boost:** The lighting enhances alertness and performance, positively affecting mood and energy during the day.
5. **Aids in SAD Management:** By simulating natural sunlight, the system helps manage Seasonal Affective Disorder, crucial for those affected by seasonal changes.

By utilizing this lighting technology, Light Mandalas enhances guest experiences, ensuring personalized comfort that promotes restful sleep and overall health.





Mood Architecture: Full Spectrum LED Light Light & Color therapy for Circadian lighting and stress management

Circadian lighting works in harmony with our internal clocks by providing the proper color temperature during the evenings and nights, modulating the intensity, spectrum, and color of electric light in symbiosis with the natural lighting cycle. This harmony amplifies the occupant's comfort and relaxation and creates a healthier visual environment and experience. It is important to note that the wavelengths that impact our biological rhythm can be modified without shifting the visual appearance of the light color. There is also a psychological benefit, even on a subconscious level, to shifting the color temperature because it reinforces the connection with nature.





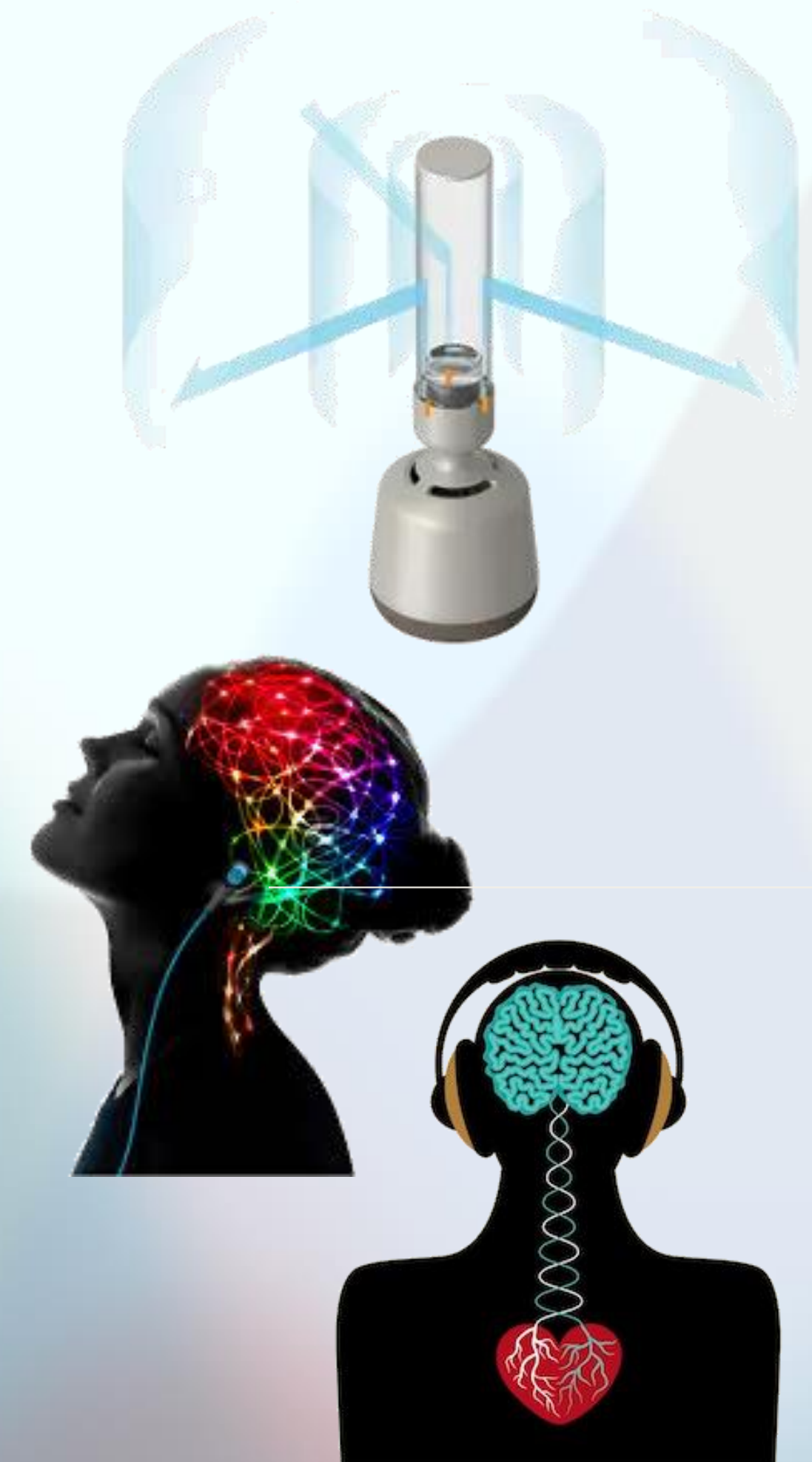
Mood Architecture: Hi-Definition Sound Therapy

Binaural, Solfeggio and Affirmations Sound Therapy

Sound therapy, particularly the use of a 360-degree high-definition sound therapy system, has been shown to offer several benefits for stress relief and emotional healing. Here are some of the key advantages supported by the provided sources:

1. **Stress Relief and Emotional Healing:** Sound therapy has been reported to bring inner calm and stress relief, leading to dramatic changes in the way individuals deal with and respond to stress. It can help reduce the build-up of stress beyond healthy levels by restoring normal functions to the nervous system, releasing latent energy in the brain, and enhancing focus, concentration, and inner calm.
2. **Physical and Mental Benefits:** Studies have shown that sound therapy can lead to reduced muscle tension, improved sleep, increased confidence and energy, and decreased symptoms of health conditions.
3. **Relaxation and Deep Rest:** Sound baths, a form of sound therapy, act much like meditation, leading to deep rest and relaxation. They help reduce tension, anxiety, and depression, thus aiding in stress management.
4. **Personal Experience:** An individual's experience with sound therapy can be highly effective in dealing with stress. Calm and quiet sounds can help move an individual from a state of fight-or-flight to a relaxed state.

In summary, the use of a 360-degree high-definition sound therapy system, emitting gentle precise frequencies and sound waves, combined with personalized affirmations, is a valuable tool for lasting stress relief and deep emotional healing, offering a holistic approach to wellness.





Mood Architecture: Mandala Resonator

Mandala Resonator is a unique universal broadband harmonizing generator-modulator designed to create a natural stabilizing electromagnetic background field, incorporating light, sound, and electromagnetic frequencies to harmonize the mood in spaces and contribute to relaxation and well-being. When combined with the tablet-based Bio-resonance evaluation tool Mandala Scan, it detects and reports the degrees of deviation between the client's energetic field and sends correcting signals to harmonize their emotional, mental, and physical energetic balancing.

The Resonator offers several features and benefits, as highlighted in the provided sources:

1. ****Electromagnetic Smog Counter****: The Resonator effectively counters electromagnetic smog, promoting balance and harmony in the environment.
2. ****Customizable Healing Experiences****: It offers 16 million color combinations, musical sound generation, and a tablet app for customizable healing experiences.
3. ****Harmonizing Field****: The Resonator generates a harmonizing field similar to the natural radiation of objects such as forests and natural environments, aiming to bring the body back to resonance with nature.
4. ****Improvement in Human Condition****: Tests have shown an improvement in the general state of the user within 1-4 days of exposure to the Resonator in harmonizing mode, enhancing mental and physical health.
5. ****Biological Regulation and Harmonic Modes****: The Resonator offers various modes, including biological regulation mode, torus mode for reconciling and shielding harmful plasma/electromagnetic waves, and harmonic mode for transmuting the room and human energy fields.
6. ****Application and Pairing****: The Resonator can be paired with the Mandala Star android application to set preferred programs for energizing and harmonizing the room and space.

In summary, the Mandala Resonator is a versatile and innovative device that aims to create a harmonious and balanced environment, offering a range of features to support well-being and relaxation.





Mood Architecture: Mandala Galaxy Projector

Projecting Mood light of Galaxies, Constellations, Aurora, Water and other atmospheres for stress relief.



Mood Architecture: Earthing

Grounding, also called earthing, is a therapeutic technique that involves doing activities that “ground” or electrically reconnect you to the earth. This practice relies on earthing science and grounding physics to explain how electrical charges from the earth can have positive effects on our cellular health and body.



Due to modern housing and city lifestyles, grounding opportunities are fewer, therefore it is essential to offer grounding solutions

Using grounding equipment

- grounding mats
- grounding sheets or blankets



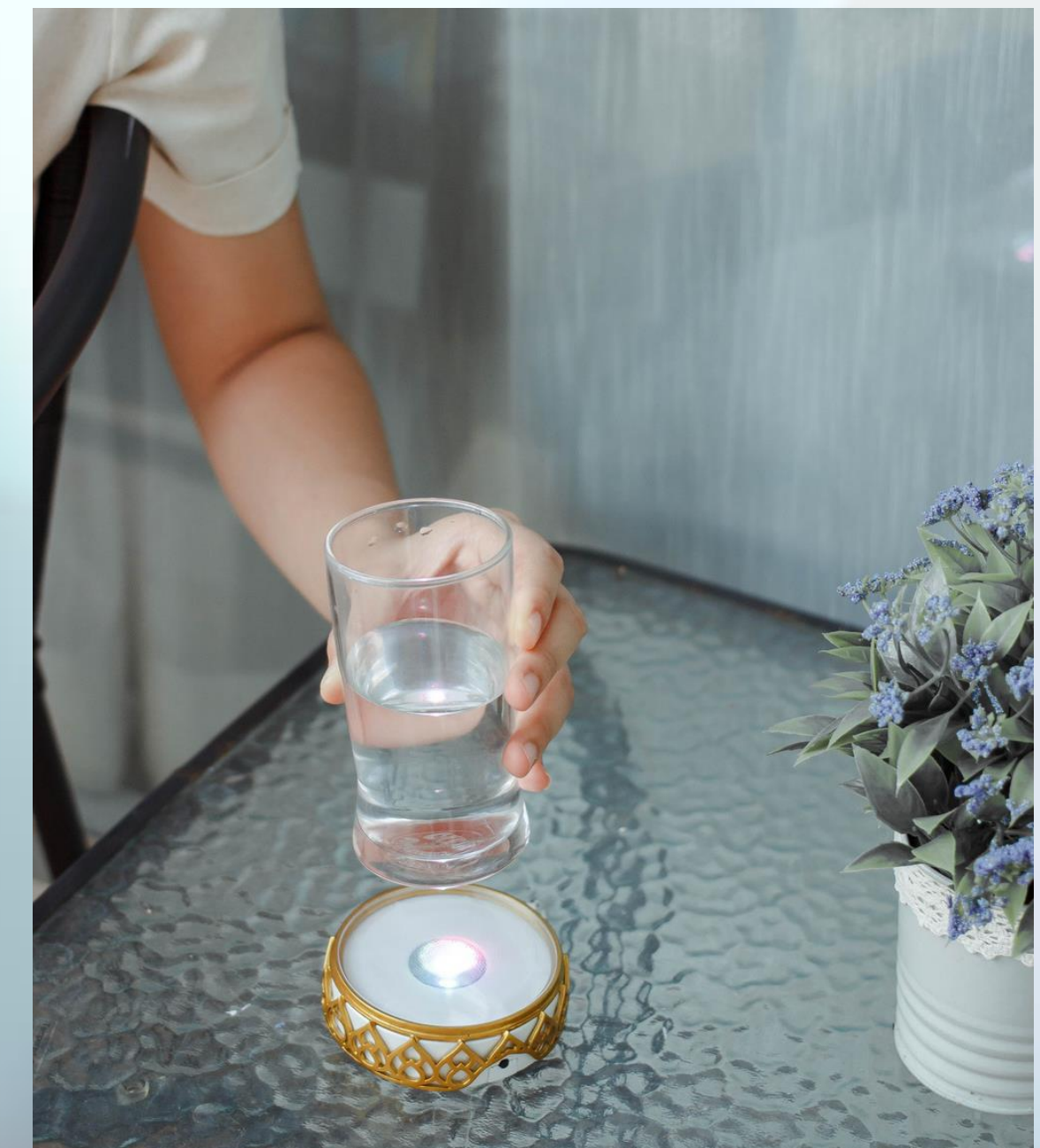
Mood Architecture: Water Structuring

Water Element Activator and Structurer from Light Mandalas is a device that energizes and restructures water and other substances by programming important resonances and health-enhancing qualities into their molecular clusters.

This activation process activates natural elements and minerals for better absorption and hydration, making the water more bioavailable.

Water is essential for transporting nutrients to cells and oxygen to the brain, absorbing essential substances like minerals, vitamins, and glucose, flushing out toxins, regulating body temperature, and assisting in waste removal.

All drinking water offered is activated and molecularly structured.



Ozone Disinfection in all Rooms

Ozone disinfects the air strengthens the immune system, stimulates white blood cells, preventing infections and immune system deficiencies by destroying fungi, bacteria and viruses and removes bad smell and helps reduce the air dust, help breathing more smoothly, and also can improve the sleep quality.

Aside from the health benefits, it also decreases allergy symptoms, as well as promotes faster recoveries from fungal and bacterial respiratory infections. In addition to reports of improved mood.





Mood Architecture: Electronic Frequency Mosquito repellent

Mosquito repellent with special protective frequencies emits protective energy for 24-hour space coverage. Experience continuous energy protection with tablet controls for customized frequency adjustment.





Mandala Mood Interiors Architecture

Holistic Eco-Wellness Healthy Life-Style Rooms Technology

Wellness Room System Includes:

- Full Spectrum Circadian Rhythm LED Light strip for the room
- Mandala Resonator
- Control Tablet with Wireless control module for the room
- Mandala Water Activator + 7 Chakra Activator + Silicon Disk
- Mandala Scan
- Earthing Mat for bed
- Ozonized disinfection device for bathroom, automatic system
- Mandala Star Projector
- 360 degree Hi-definition Sound therapy system with a special track